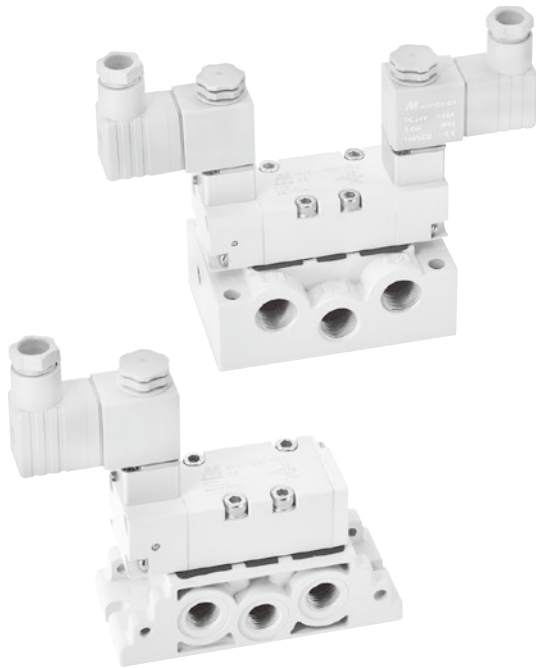


MVSI-260 series

ISO-1 SOLENOID VALVE



Mindman



Specification

Model	4E1	4E2	4E2 C.P.R
No. of port	5		
No. of position	2		3
Medium	Air		
Operating perssure range	0.2~0.7 MPa		0.3~0.7 MPa
Proof pressure	1 MPa		
Effective orifice	22 mm ²		20 mm ²
Reponse time	40 ms		
Ambient temperature	-5~+50°C (No freezing)		
Voltage	AC110V, 220V (50/60)Hz, DC24V		
Power consumption	AC=4.8/4.4VA, 6/4.9VA, DC=2W		
Available voltage range	±10%		
Insulation class	F class		
Weight	312 g	422 g	572 g

Order example of valve

MVSI – 260 – 4E2C – AC110 – L

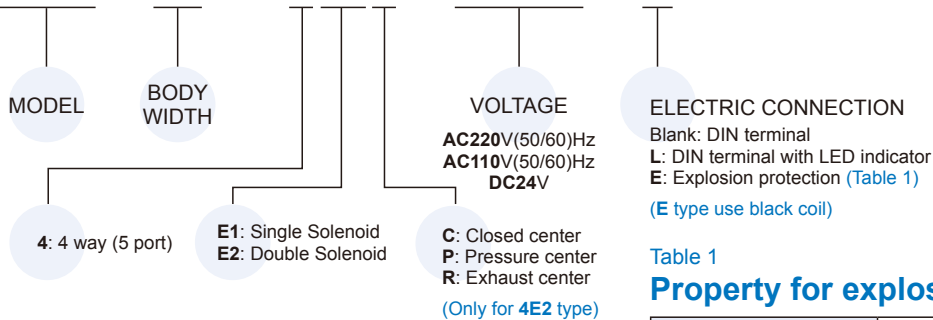


Table 1

Property for explosion-proof type

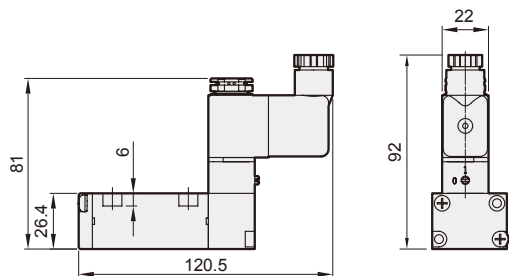
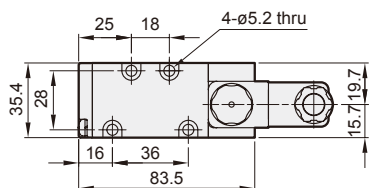
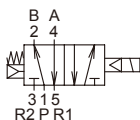
Anti-explosion class	EEx m II T4
Voltage	AC110V, 220V.(50/60)Hz, DC24V.
Power consumption	AC=4.4VA DC=5W
Available voltage range	±10%
Insulation class	F class
Wire length	3 m

MVSI-260 Dimensions

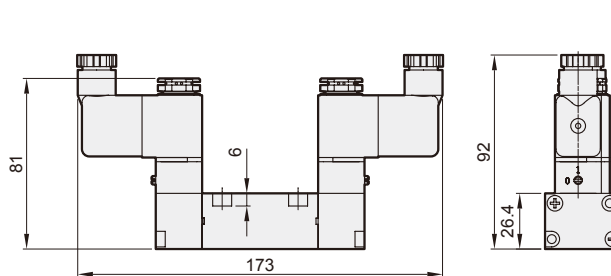
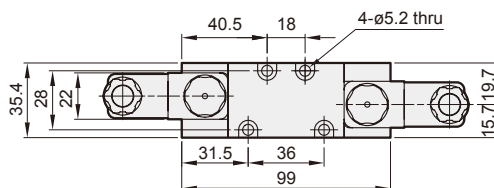
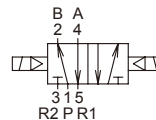
ISO-1 SOLENOID VALVE



MVSI-260-4E1

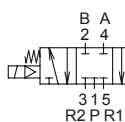


MVSI-260-4E2

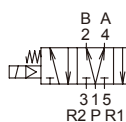


MVSI-260-4E2C.P.R

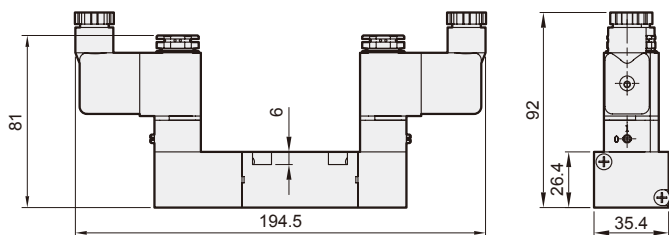
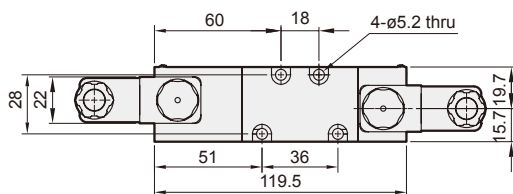
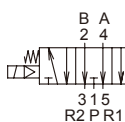
MVSI-260-4E2C



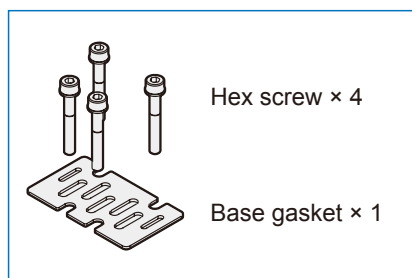
MVSI-260-4E2P



MVSI-260-4E2R



Accessories



Flow features

MVSI-260-4E1/4E2

